

BANDONEON 142/II/II "Rheinische/ Argentinische Lage"

M.D.

A

A series of circular diagrams arranged in a roughly triangular shape, each containing a musical staff with a treble clef. The diagrams illustrate various fingerings and articulations for the right hand, including slurs and accents. Some diagrams include the letter 'A' above them, indicating the 'abriendo' technique.

A single line of musical notation in treble clef, showing a sequence of notes and rests. The notes are: A, A#, Bb, B, C, C#, Db, D, Eb, E, F, F#, Gb, G, G#, Ab, A, Bb, B, C, C#, Db, D, D#, Eb, E, F, F#, Gb, G, G#, Ab, A, B. The final measure is marked with a first ending bracket and a '1' above it.

C

A series of circular diagrams arranged in a roughly triangular shape, each containing a musical staff with a treble clef. The diagrams illustrate various fingerings and articulations for the right hand, including slurs and accents. Some diagrams include the letter 'C' above them, indicating the 'cerrando' technique.

A= abriendo (opening/ ziehen/ tirer/ tirare)

C= cerrando (closing/ stossen/ pousser/ spingere)

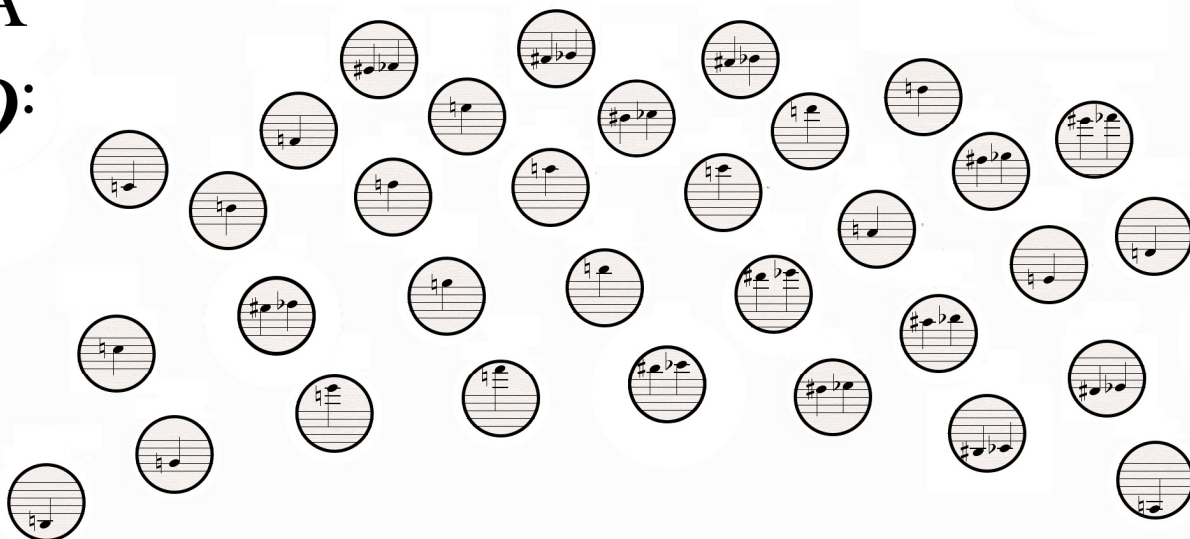
M.D.= mano derecha (right hand / rechte hand / main droite/ mano destra)

M.I.= mano izquierda (left hand/ linke hand/ main gauche/ mano sinistra)

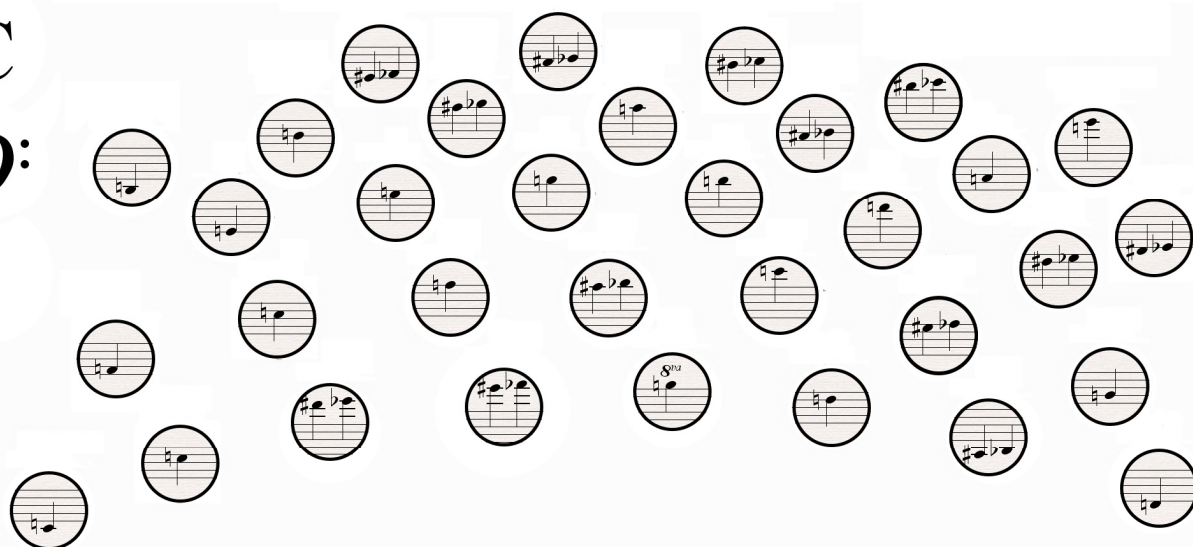
BANDONEON 142/II/II "Rheinische/ Argentinische Lage"

M.I.

A
♭



C
♭



A= **abriendo** (opening/ ziehen/ tirer/ tirare)

C= **cerrando** (closing/ stossen/ pousser/ spingere)

M.D.= **mano derecha** (right hand / rechte hand / main droite/ mano destra)

M.I.= **mano izquierda** (left hand/ linke hand/ main gauche/ mano sinistra)